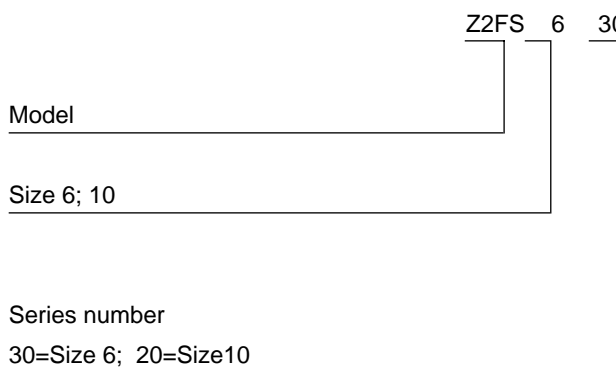
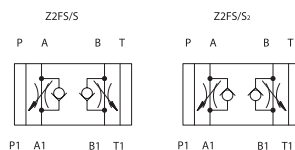


Z2FS SERIES DOUBLE THROTTLE CHECK VALVES

Z2FS series double throttle/check valves are used to restrict flow in one direction while allowing free-flow in the opposite direction as check valves.



Z2FS 6 30 / S V *

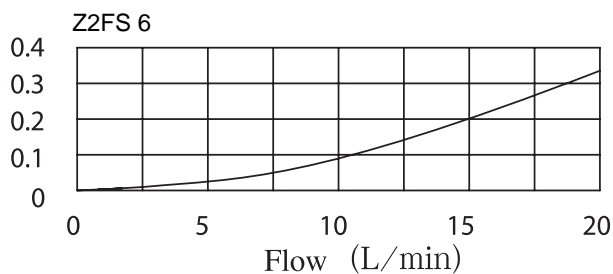
For further details

No code=NBR seals for petroleum oils
V=FPM seals for phosphate ester

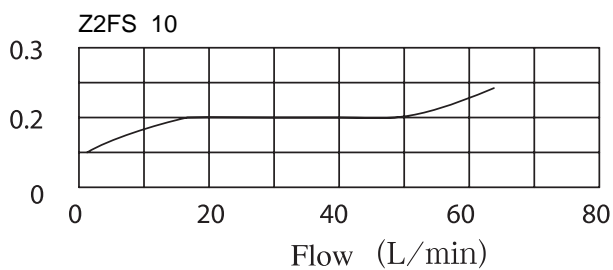
S=Meter-in control ; S2=Meter-out control

Technical data

Size	6	10
Operating pressure (MPa)	31.5	31.5
Flow rate (L/min.)	80	160
Fluid temperature range (°C)	-30-80°C	-30-80°C

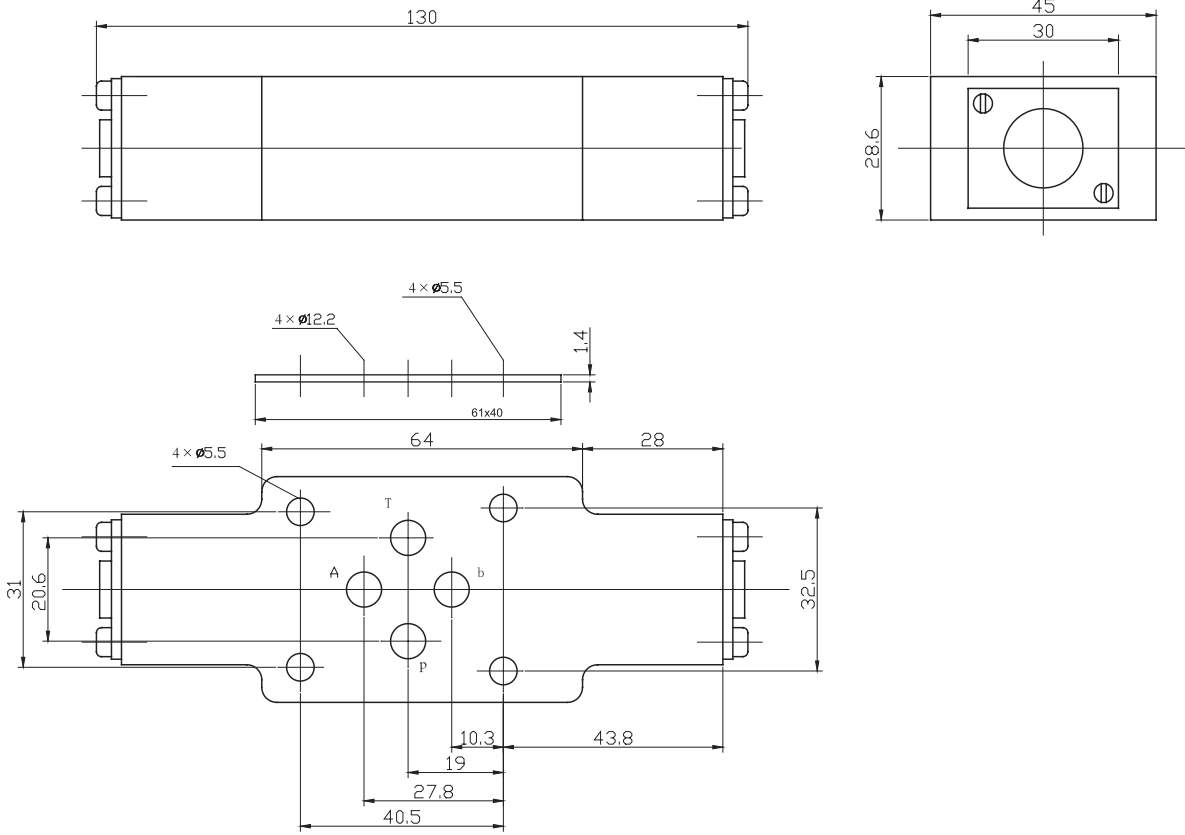


(MPa)
Pressure difference

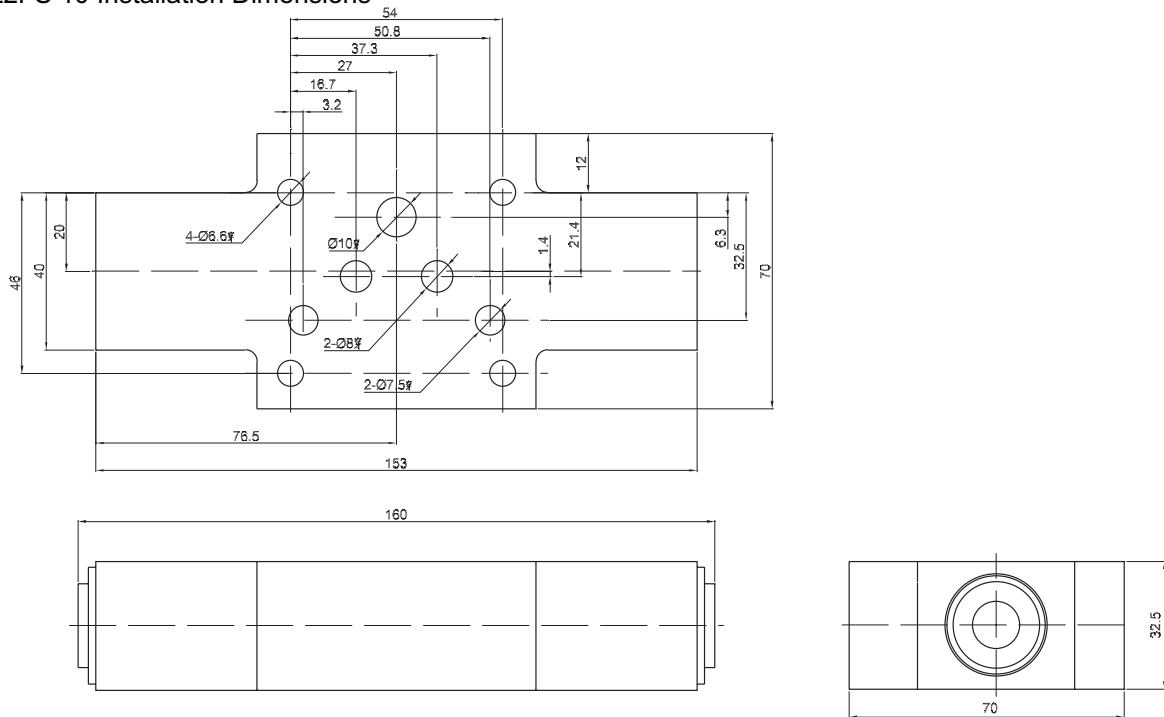


(MPa)
Pressure difference

Z2FS 6 Installation Dimensions

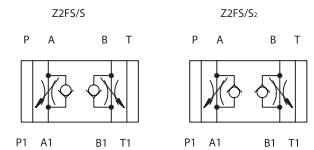


Z2FS 10 Installation Dimensions



Z2FS SERIES DOUBLE THROTTLE CHECK VALVES

Z2FS series double throttle/check valves are used to restrict flow in one direction while allowing free-flow in the opposite direction as check valves.



Z2FS 16 30 / S V *

Model _____

Size 16 _____

Series number
30=Size 16 _____

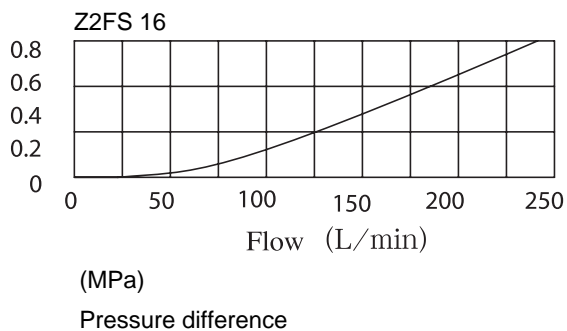
For further details _____


No code=NBR seals for petroleum oils
V=FPM seals for phosphate ester

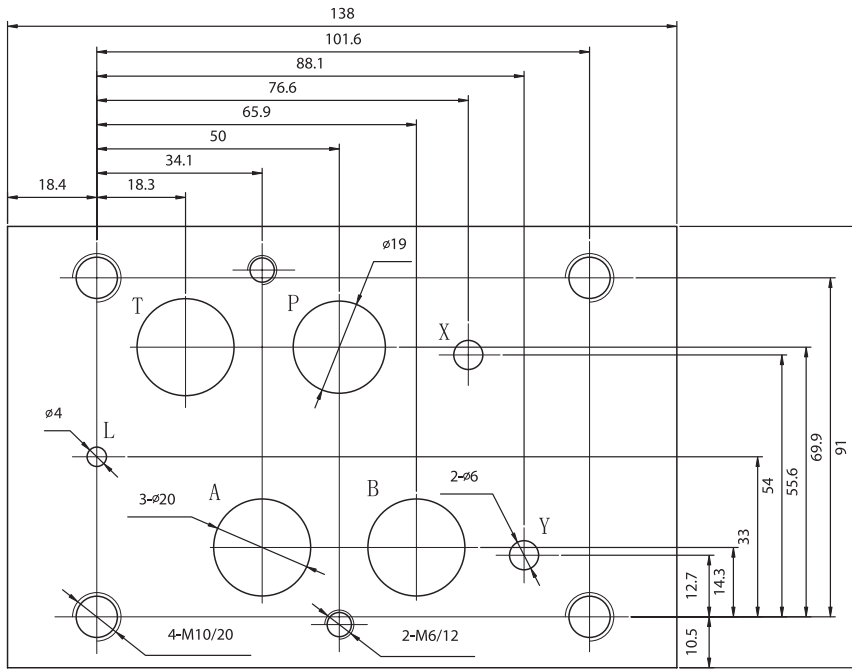
S=Meter-in control ; S2=Meter-out control

Technical data

Size	16
Operating pressure (MPa)	35
Flow rate (L/min.)	250
Fluid temperature range (°C)	-30-80°C



 Z2FS Installation Dimensions



▶ Flow curves at a constant throttle setting

