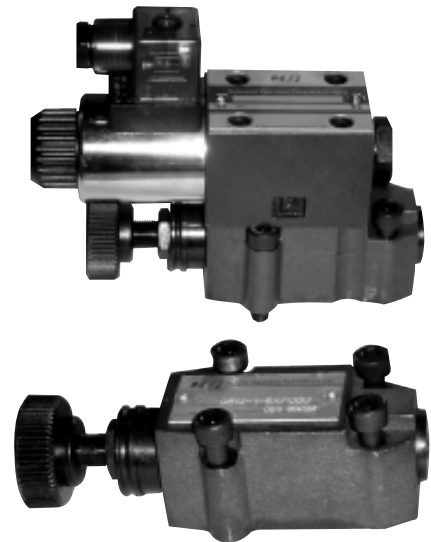
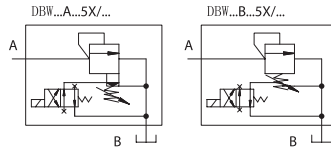
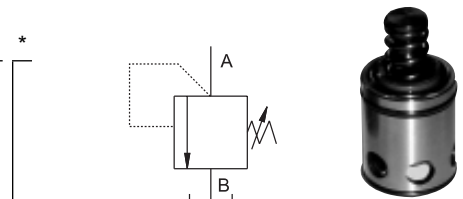


DBT/DBWT SERIES REMOTE CONTROL RELIEF VALVES

DBT/DBWT series remote control relief valves are direct relief valves. DBT series relief valve can be used to remote control pressure in hydraulic systems. DBWT series are used to remote control pressure in a system and unload pressure with a solenoid valve.



	DB	W	T	A	1 - 30 / 100	G24	N	Z4 / 2 / V *
Model								
No code=Without solenoid valve W=With solenoid valve								
No code=Pilot operated valve C=Pilot valve without main spool(without size) C=Pilot valve with main spool(with size 10 or 30) T=Pilot valve without main spool for subplate connection(without size)								
A=Normally closed; B=Normally open								
1= Handle knob; 2=Adjustable screw with protection cap								
Series number 30 and 50								
100=10MPa; 315=31.5MPa								



For further details

No code=NBR seals for petroleum oils
V=FPM seals for phosphate ester

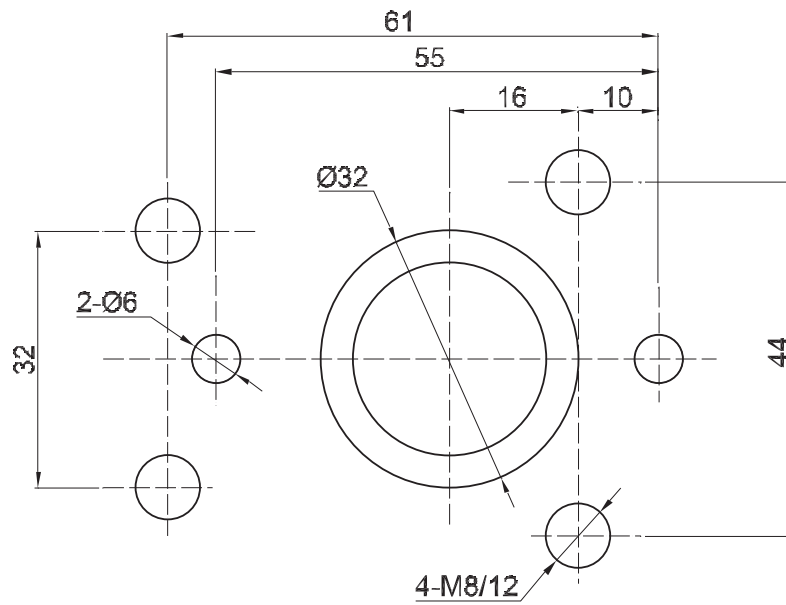
No code=Y, Z 1/4"; 2=Y, M14/1.5

Z4=Small quadrate plug;
Z5=Big quadrate plug

No code=Without checking button
N= With checking button

W220=AC 220V; G24=DC 24V

▶ DBT Installation dimensions



Technical data

Operating pressure		31.5
Back pressure	DBT	31.5
	DBWT	AC up to 10,DC up to 16
Max. adjustable pressure		31.5
Max. flow rate		3
Fluid temperature range		-20~70
Filtration accuracy		25